

StarFish 990F

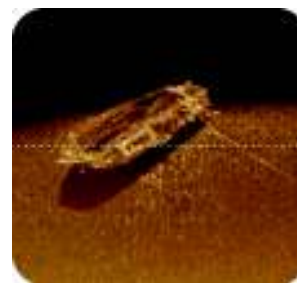
The ultimate high resolution StarFish side scan sonar for extreme image definition and target detection. The sonar uses a high frequency 1MHz CHIRP transmission with extremely narrow horizontal acoustic beam to provide the sharpest, most defined images from any StarFish system. With 35m/ 105ft range capability on each channel (70m/ 210ft total swathe coverage), the sonar is ideal for high resolution survey in ports & harbours, inland waterways such as rivers and canals, and optimised for SAR (Search And Recovery/Rescue) operations. The sonar also has an inline connector to allow the cable to be swapped or replaced on site.



A "Hawker Siddeley 748" aeroplane, and small boat wreck.



Training mannequin and Search-And-Rescue diver.



Wreck of a small launch.



StarFish 452F

Building on the success of the original StarFish 450F, the new StarFish 452F sonar has TWICE the image resolution compared to the 450F model, while continuing to offer wide range imaging capability of 100m/ 300ft per channel (200m/ 600ft total swathe coverage). The sonar uses a mid-band 450kHz CHIRP transmission to offer the greatest combination of ranging capability and image resolution from a single frequency system. The sonar also has an inline connector to allow the cable to be swapped or replaced on site. Existing owners of StarFish 450F & 450H systems can upgrade to the new StarFish 452F should they desire higher definition sonar imagery.



A "Hawker Siddeley 748" aeroplane and small boat wreck.



Submerged Pilings
(courtesy of M. Szatan)

STARFISH SEABED IMAGING SYSTEMS



Tritech International Limited, Peregrine road, Westhill, Aberdeen, AB32 6JL, United Kingdom



+44 (0)1224 746979



www.starfishsonar.com

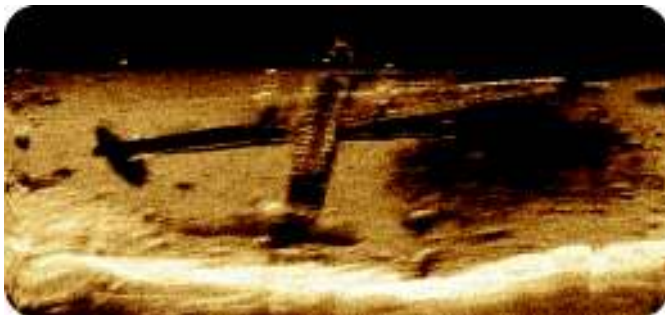
StarFish 450F

The original StarFish 450F sonar offers a powerful, yet affordable, entry-level side scan sonar system for shallow water survey work. Since its launch, the StarFish 450F has gained worldwide recognition as the most portable, affordable, towed side scan sonar on the market. Powered by a 450kHz CHIRP transmission, the 450F provides wide range sonar coverage up to 100m/ 300ft per channel (200m/ 600ft total swathe) with good, clear image definition.



StarFish 450H

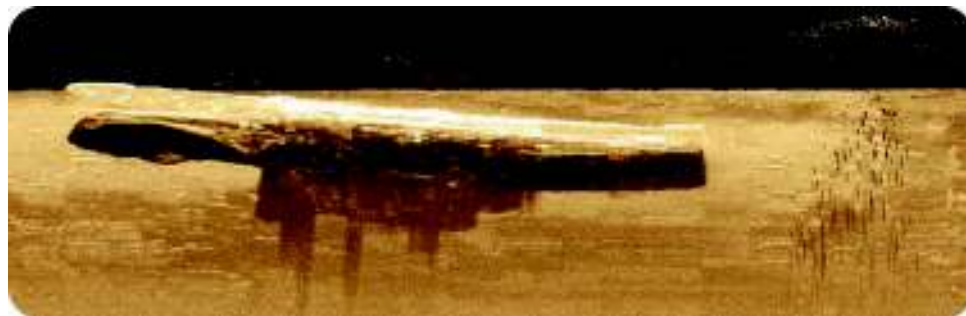
For those who'd prefer a side scan system permanently fixed to their vessel, the StarFish 450H sonar has been specifically designed to be fitted to the hull or transom of a vessel. Offering the same technical specification and imaging capability as the StarFish 450F sonar, the 450H system removes the worry of snagging a towing cable for novice users. The compact, slim-line sonar design combined with our flexible mounting bracket ensure the system can be quickly fitted to your vessel, getting you started in no time.



A "Hawker Siddeley 748" aeroplane and small boat wreck.



Sunken concrete blocks at Świnoujście Harbour, Poland.
(courtesy of M. Szatan)



Wreck of the HMAS Swan, and school of Samson fish
(courtesy of R. Ricketts)

STARFISH SEABED IMAGING SYSTEMS



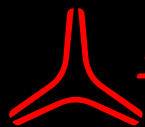
Tritech International Limited, Peregrine road, Westhill, Aberdeen, AB32 6JL, United Kingdom



+44 (0)1224 746979



www.starfishsonar.com



Starfish Product Specification Summary

 STARFISH 990F	 STARFISH 452F	STARFISH 450F	STARFISH 450H
			

SONAR			
Frequency	1MHz CHIRP	450kHz CHIRP	
Operating Range	35m (115ft) per channel	100m (328ft) per channel	
Operational Water Depth	30m/ 100ft		
Horizontal Beam Width	0.3°	0.8°	1.7°
Vertical Beam Width	60°		
Transducer Angle	Tilted Down 30° from Horizontal		
Length	378mm (14.88")		195mm (7.68")
Width	110mm (4.33")		130mm (5.12")
Height	97mm (3.81")		35mm (1.38")
Weight (in Air)	2.0kg (4.41lb)		0.7kg (1.54lb)
Construction	Reinforced polyurethane rubber		
Colour	High-Vis Red	High-Vis Yellow	Black
Depth Rating	50m (164ft)		
Connector	Impulse, 5-way		N/A
Supported Software Platforms	Hypack 2009, SonarWiz.MAP/ SonarWiz 5 (Chesapeake Technology) and CleanSweep-Lite (Oceanic Imaging Consultants, Inc.)		
Applications	Law Enforcement/ Homeland Security, Wreck Location/ Archaeology Survey, Engineering, Dive Clubs, Academic/ Research, Angling/ Fishing		
TOP-BOX			
Model	990	450	
Supply Voltage	90-264VAC, 47-63Hz or 9-28VDC		
Power Consumption	6W (500mA @ 12VDC)		
Power Interface	2.1mm DC jack socket		
PC Interface	USB 2.0 B-Type connector		
Sonar Interface	9-Way Female D-Type socket		
Length	166mm (6.54")		
Width	106mm (4.17")		
Height	34mm (1.34")		
Weight (in Air)	0.4kg (0.88lb)		
Temp Range	-5°C to +40°C (23°F to 104°F)		
IP Rating	IP50 (Protection against ingress of dust, no protection against ingress of liquids)		
CABLE			
Length	20m (65ft) or 50m (164ft)	20m (65ft)	5m (16ft) or 20m (65ft)
Construction	Black polyurethane jacket with internal Kevlar reinforcing (strain) member		
Breaking Strain	>150kg (330lb)		
Minimum Bend Radius	30mm (1.2")		
Connector	Impulse, 5-way		N/A

STARFISH SEABED IMAGING SYSTEMS



Tritech International Limited, Peregrine road, Westhill, Aberdeen, AB32 6JL, United Kingdom



+44 (0)1224 746979



www.starfishsonar.com

Please note all specifications are subject to change in line with Trittech's policy of continual product development.

StarFish Scanline Software

Included with every system out-of-the-box, StarFish Scanline software is the intuitive, easy to use data acquisition & logging package for our StarFish side scan sonar range. The software is compatible with 32bit & 64bit Windows OS (XP/ Vista/ 7) and has been designed to be simple and intuitive to operate, for both novice and experienced users alike. Helpful 'Wizards' get you started quickly. Side scan sonar imagery is displayed in real-time and digitally recorded along with data from other devices such as GPS receivers, compasses and speedometers should you wish to interface them to the software. Key features include...

Interactive Displays

The side scan plotter window displays sonar data as a standard 'waterfall' image. The operator can control whether port, starboard, or both sonar channels are active and displaying data. Side scan data can be magnified or stretched to change the aspect ratio of seafloor targets and help aid in their identification, and the orientation of data plotting on the display can be changed (from top-to-bottom, left-to-right, or vice-versa) to help users interpret real-time sonar data relative to the boat. All the display plotters in Scanline provide interactive functions for use by the user. Dragging the Sonar display with the mouse allows historical data to be viewed. When the cursor is moved over a sonar target, the associated position information (if a GPS device is connected) will be shown in the status bar.



Display Widgets

Scanline uses Widgets to provide extra control, functionality or show data from hardware sensors. Widgets can be displayed on either side of the main display, and rolled-up when not in use to maximise available space. Default Widgets include Vessel Details (Heading / Velocity / Position), Log Player, Hardware Manager and GPS Satellites.

Other Features

Ribbon-style tabbed menu with large icons to simplify operation and settings. Data Export Wizard converts StarFish log files into industry standard XTF format. Snapshot function allows screen capture to image file (BMP, PNG, TIFF, JPG). Comprehensive integrated help system. StarFish log files are also compatible with various data packages, please see the summary table, page 5 for more information.



NEW Software Development Kit (SDK)

For advanced users who wish to integrate a StarFish side scan system into their own new or existing software package, Trittech make this process simple with the launch of the new StarFish Software Development Kit (SDK). Available for download free of charge from the StarFish website.



STARFISH SEABED IMAGING SYSTEMS

✉ Trittech International Limited, Peregrine road, Westhill, Aberdeen, AB32 6JL, United Kingdom
 ☎ +44 (0)1224 746979
 🌐 www.starfishsonar.com