

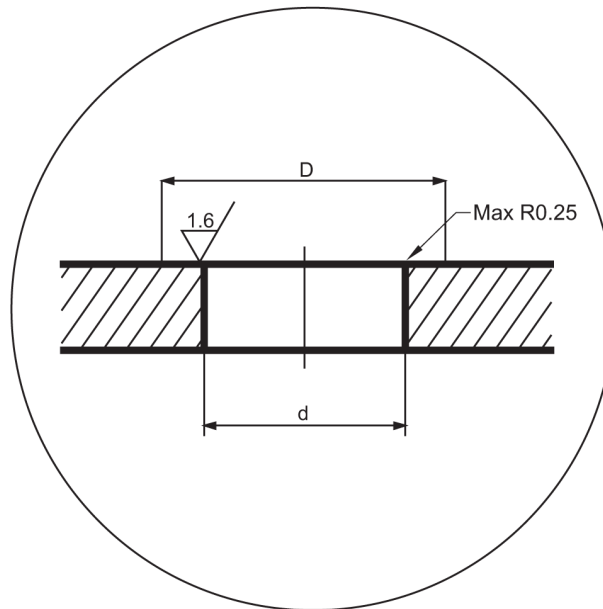
SubConn® Notes

Torque on standard threads of different Subconn's

Type	Material	Rec.Torque -Nm
3/8" - 24UNF	Brass	4,0
	Stainless	6,0
7/16" - 20UNF	Brass	10,0
	Stainless	14,0
1/2" - 20UNF	Brass	15,0
	Stainless	21,0
5/8" - 18UNF	Brass	29,0
	Stainless	41,0
3/4" - 16UNF	Brass	44,0
	Stainless	63,0

Type	Material	Rec.Torque -Nm
7/16 thread	Peek	4,2
1/2" thread	Peek	7,0
5/8" thread	Peek	10,0

Recommended Mounting Holes



Thread Size	Hole Size (d)	Tolerance	Surface Size (D)	Dimensions in mm. Threads in inches. 1 inch = 25.4 mm. 1 mm = 0,03937 inch. Modification rights reserved
3/8"	ø 9.5 mm	+/- 0.1	ø 25.0 mm	N/A
7/16"	ø 11.3 mm	+/- 0.1	ø 25.0 mm	
1/2"	ø 12.8 mm	+/- 0.1	ø 25.0 mm	N/A
5/8"	ø 16.0 mm	+/- 0.1	ø 30.0 mm	
3/4"	ø 20.5 mm	+/- 0.1	ø 40.0 mm	N/A
1"	ø 26.0 mm	+/- 0.1	ø 50.0 mm	
7/8"	ø 22.5 mm	+/- 0.1	ø 40.0 mm	N/A
1 1/2"	ø 38.5 mm	+/- 0.1	ø 55.0 mm	